



ASB Community Trust

Te Kaitiaki Putea o Tamaki o Tai Tokerau

supported by **ASB**

TRUSTLINE



A BLAST OF CREATIVITY

More on page 4

- INDEX -

- Tim Bray Productions.....pg4
- Storylines Festival.....pg4



■ Waipu Museum celebrates.....pg5

- Public meeting dates set.....pg5
- Unified region urged.....pg6



■ Sport funding reviewed.....pg7

- Catch the eye of generation Y...pg7



■ Russell celebrates.....pg8

Printed with vegetable inks on 100% recycled paper.

ASB Community Trust
 50 Ponsonby Road,
 PO Box 68-048 Auckland
 Ph (09) 360 0291 or
 0800 272 878
info@ASBCommunityTrust.org.nz
www.ASBCommunityTrust.org.nz

ASB Community Trust was established in 1988 following the sale of its shares in ASB Bank Ltd. The Trust is grateful to ASB for its ongoing support.

Kia ora and warm Pacific greetings. Welcome to the June 2008 edition of TrustLine.

In this edition we update you on the Maori and Pasifika Education Initiative, which aims to lift educational achievement in our region.

Earlier this year we asked the community to share their ideas with us and we had an overwhelming response – almost 300 expressions of interest!

We're now working through the list to find groups and projects that we can work to ensure that our Maori and Pasifika children can fully engage in society.

Elsewhere in TrustLine you'll read about our new policies for recreation and sport funding.

We want to make it as clear as possible what, and how much, we can fund, so we have set up three funding streams: participation, innovation and infrastructure.

It's our aim to support organisations that focus on community participation and engagement in recreation and support is provided to organisations that increase participation by younger and older people.

ASB Community Trust has always been a supporter of the region's community infrastructure and it's for that reason we decided to make submissions on two important hearings this year – The Royal Commission on Auckland Governance and the Auckland Regional Amenities Funding Bill.

The Trust believes the Auckland region needs a unified structure that promotes visionary leadership. We find the current structure makes it hard for us to plan and allocate funds.

You can read more about our submissions on page six.

We also like to celebrate community success, so as always there is a mix of stories



ASB Community Trust CEO Jennifer Gill

"The Trust believes the Auckland region needs a unified structure that promotes visionary leadership."

in TrustLine about the work of groups we have funded. You'll also get to meet our new trustees and staff.

They'll be joining other trustees and staff at our two annual public meetings this year – we hope you can join us.

In Auckland the event includes an expo that brings together key funders and support organisations, while in Whangarei we'll run an application workshop after the public meeting.

We look forward to meeting you there.

Measuring our carbon footprint

AS PART of our commitment to the environment, the Trust has launched a project to measure our carbon footprint and look at ways to minimise it.

We are using Landcare Research's CarboNZero programme to analyze our resource use – including travel and electricity – and measure our carbon footprint.

Once we know how much carbon the organisation is generating, we can develop a

management plan to work on reducing it.

This is a long-term project and we expect to develop accurate ways to monitor our activities and minimize our environmental impact.

As we learn more, we'll be happy to share our experiences with other community groups who have decided to take climate change action too.

■ www.carbonzero.co.nz

Groundswell response

Kiwiana theme catches the eye



Maori and Pasifika Education Initiative project manager *Moi Becroft* talks with a hui participant.

We've had a groundswell response to our Maori and Pasifika Education Initiative.

Through various mediums, including a series of hui and fono held throughout Auckland and Northland in March, we asked the public to come up with ideas that could help raise educational achievements for Maori and Pasifika communities – ideas that the Trust might then be able to help fund.

Almost 300 groups replied, sharing their dreams and outlining how they could make a better future for our young people.

Of the 298 expressions of interest received, 122 targeted the Maori community, 62 targeted the Pasifika community and the remaining 114 targeted both the Maori and Pasifika communities.

The expressions of interest have now gone to our selection committees for consideration. A Maori selection committee was established to consider proposals for Maori

and a Pasifika selection committee was established to consider proposals for Pasifika.

The first meeting for each committee took place in May and further meetings are scheduled for June, including a meeting for both selection committees to consider proposals for both Maori and Pasifika.

Both selection committees are looking for proposals that:

- promote community development opportunities for future growth
- demonstrate innovation (an 'outside current structures' approach to education)
- challenge the status quo and/or current Maori and Pasifika education statistics
- demonstrate a collaborative community/school approach
- have community ownership of responsibility as well as expectation.

As outlined on the Initiative website, all groups will be told of decisions by early July.

■ www.initiative.org.nz

New staff join the Trust's team

AFTER ADVERTISING for staff replacements in the first half of 2008 we are now close to a full compliment.

Moi Becroft has moved from our Grants team to become Project Manager for the Maori & Pasifika Education Initiative project and Annie Johnson joined the project team in March as Project Administrator.

Munisha Harverye has been appointed Executive Assistant and Anna Palmer is now our Internal Communications Manager.

Greta Buchanan has joined us as a Grants Advisor specialising in community economic development and social service grant

applications. Melanie Brayshaw is to join the Trust as a new Administration Assistant for the grants team.

Grants advisor Jay Farris left in early March and we have since been advertising for two more grants advisors.

One Grants Advisor will specialise in working with the Pasifika community and the other will assess applications for community facilities and capital projects.

Once those appointments are made, the Trust will be up to full strength and fully resourced to serve the Auckland and Northland communities.

THE KIWIANA theme of our 2007 annual report caught the eye of South Auckland Hospice CEO Elaine Dow.

She thought it's images would be the perfect way to brighten the Manurewa caregivers corridors.

The design company that came up with the annual report concept, 4is, thought it was a great idea too.

They arranged for copies of each image to be mounted and sent to the hospice.

The hospice, which provides palliative care for people

who's illness is no longer curable, aims to help people achieve the best possible quality of life during their final stages of their illness.

Its work has been supported by ASB Community Trust since 1990.

Elaine says the pictures are now hanging in the hallway of the new family unit, where the detail of their composition entertains visitors.

"We are delighted with the pictures," she says. Everyone enjoys them, especially the children."

Made up from images provided by many of the organisations ASB Community Trust helps fund, the collages reflect our diverse community's success.

■ www.hospice.co.nz



The 2007 annual report



Greta Buchanan



Anna Palmer



Munisha Harverye



Annie Johnson

Blast of creativity hits stage

Tim Bray describes the Operating Theatre Trust's productions as a "blast of creativity" that enters the lives of children and opens a window to new possibilities.

The trust, established in 1993, runs Tim Bray Productions, which takes professional theatre to venues throughout the region.

Many in the audience are from decile one schools and have never imagined such entertainment.

"We give them the whole experience. The lights go down, the curtain goes up. It's magic," he says.

"I often wonder what it might do to those kids, a blast of creativity for an hour, but parents tell me that a year later they're still singing the songs, still telling the jokes."

The Operating Theatre Trust's mission is to encourage the love of live theatre in children. It uses New Zealand stories, and the best international children's plays, to help develop young imaginations.

Funding from ASB Community Trust, Creative New Zealand and Lotteries has allowed the troupe to double its productions to six this year, touring plays around greater Auckland.

Part of the funding also helps children from low decile schools join in the fun with free tickets.

This year the 'Full House' sign went up at



The Twits drew full houses to every session.

Photo: Tim Bray Productions

every session of its 43rd production – Roald Dahl's *The Twits*.

The Owl and the Pussycat runs through July and Margaret Mahy's *The Dragon of an Ordinary Family* opens at the end of September.

"The plays are all based on our rich literary heritage," Tim says.

"Each show is different and targets a different age group, but we're also aware that this may be the only theatre the parents

come to.

"We aim to make it a memorable experience for the whole audience."

■ www.timbrayproductions.co.nz

"We give them the whole experience. The lights go down, the curtain goes up. It's magic."

– Tim Bray

Readers gather to meet their heroes

TWO OF our national treasures, writers Joy Cowley and Margaret Mahy, will share their stories at Auckland's Storylines Festival on June 15.

The free family fun day also features performers and the chance for children to celebrate Hairy Maclary's 25th birthday by making him a birthday card.

International guests include the UK's Babette Cole – author of that famous sex education book *Mummy Laid an Egg* – Australian writer Carole Wilkinson and American author and storyteller Cathy Spagnoli.

Among New Zealand authors at the 10am-3pm event, at the Aotea Centre, will be Dorothy Butler, David Hill, Anna Mackenzie and Jennifer Cooper, Des Hunt and Tracey Duncan.

The annual event attracts around 20,000 children, parents and grandparents, drawn

The annual festival attracts around 20,000 children, parents and grandparents, drawn by the chance to meet and listen to the people who write the books they love to read.

by the chance to meet and listen to the people who write the books they love to read.

The Storylines Festival Trust runs the family events each year as part of its drive to promote public awareness of the importance of reading and to make sure Kiwi kids get



access to high-quality literature.

The work of Storylines has been supported by ASB Community Trust since 2001.

■ For more information about the Family Day and other festival activities visit the Storylines website www.storylines.org.nz

Public meeting dates set

DATES have been set for the Trust's Auckland and Northland public meetings for 2008. We hope you will be able to join us.

On Monday, July 28, we're meeting at Albany's North Harbour Stadium.

There's an expo from 1pm-2pm, with the public meeting from 2pm-4pm.

The free expo will help community groups find out more about a range of support that is available.

Exhibitors include:

- ASB Community Trust
- Auckland City Council
- Charities Commission
- Community Waitakere
- Donate NZ
- Funding Information Service
- IRD
- Lion Foundation
- Manukau City Council
- North Shore Community and Social Services
- NZ Federation of Voluntary Welfare Organisations
- Sky City Community Trust
- Unitec's NZ Graduate Diploma in Not for Profit Management
- Volunteering Auckland

Capacity building is the theme for the day and during the 2pm-4pm public meeting a keynote speaker will be Josephine Baker.

Josephine has been CEO of Otago Economic Development Trust since 2005. She is studying for a Master in Business Administration at Auckland University and teaches level two and level four business management programmes.

She is passionate about social and economic development in New Zealand and is a proud resident of Manukau City.

We will also talk about the Trust's funding priorities and our vision for the Auckland and Northland regions.

Northland meeting

We will hold our annual Northland public meeting on Saturday, August 16.

Last year we held our meeting on a marae for the first time – Hokianga's Te Whakamaharatanga Marae.

It was such a success that we've chosen Whangarei's Pehiaweri Marae for the 2008 meeting.

We start with a powhiri at 1pm, then report on investment and grants results.

We will also explain plans for the year ahead and outline how ASB Community

Trust grants can help community groups.

This will be followed by a funding workshop, where community group representatives can talk to the Trust's Grants Advisors about projects and get advice on the grants process.

At the end of both meetings there is always time to meet up and chat informally with trustees and staff.

We value this as a chance to connect with community members from throughout the region, so we hope you'll be able to attend one of the meetings.

To help us cater for numbers, please email us at info@ASBCommunityTrust.org.nz, telling us which meeting you will attend and how many members of your organisation are coming.

Keynote speaker Josephine Baker is passionate about social and economic development in New Zealand.



The Waipu Pipe Band, left, marks the occasion. Meanwhile, Alan McKenzie, above, joins friends to celebrate with a wee dram.

Scottish heritage celebrated

THE REDEVELOPED Waipu Museum officially opened its doors at the end of March.

The centre celebrates the Celtic heritage of Northland's Waipu district. Helped by an

ASBCT grant, it has been turned into a hi-tech experience by developer Chris Currie.

"Chris' vision, combined with our unique migration story, has produced an attraction

that celebrates the Waipu settlement saga and will captivate and educate visitors," says museum manager Patsy Montgomery.

■ www.waipumuseum.com

Unified regional structure urged

The Auckland region needs a unified structure that promotes visionary leadership, the Trust has told the Royal Commission on Auckland Governance.

Answering the commission’s call for submissions on the topic, the Trust says there is a lack of regional thinking, co-ordination, planning and action.

That makes it difficult for the Trust to plan and allocate funds.

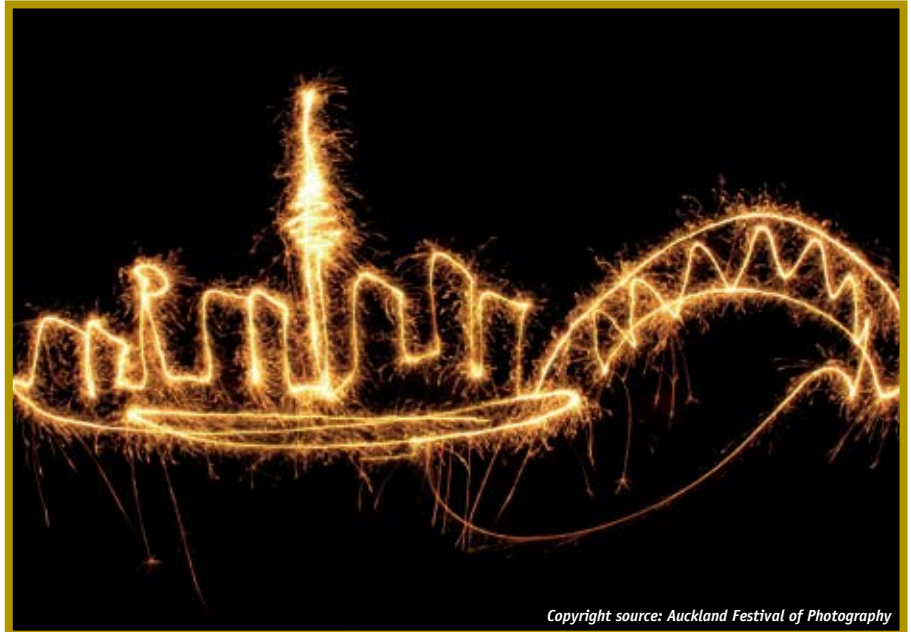
“Duplication and fragmentation of regional and local government roles causes us difficulties, as we have to consult with eight territorial local authorities,” our submission says.

“With limited resources, ASB Community Trust needs to ensure that funding is being delivered to projects that have been prioritised and identified as of regional benefit.”

However many decisions “appear to be made in isolation, as local authorities frequently operate in silos and sometimes in competition with each other”.

The submission is one of more than 3000 being considered by the commission, which has to report its recommendations to the Government by December 1, 2008.

The Trust also made a submission on the Auckland Regional Amenities Funding Bill.



Copyright source: Auckland Festival of Photography

The Trust is calling for more regional unity.

Photo: May Lee Weernink

If passed, the Bill will mean all the region’s territorial local authorities (TLAs) will share the running costs for 11 major arts and service organisations.

Our submission says the Trust “unequivocally” supports all 11 organisations and they have shared \$18m in Trust grants since 1988.

However, the “inequity” in funding provided by TLAs means all 11 organisations have faced difficulty in gaining consistent, dependable financial support.

“Currently ASB Community Trust is supporting a number of the organisations at a level that is increasingly unsustainable.”

Groups set to benefit

- Auckland Zoo.
- Auckland Observatory and Planetarium.
- Auckland Regional Rescue Helicopter Trust.
- Auckland Theatre Company.
- Coastguard Northern Region.
- National Maritime Museum.
- NZ Opera.

“ASB Community Trust strongly believes that this Bill is required and that it is required urgently to ensure the continued survival of the 11 organisations,” our submission says.

“Currently ASB Community Trust is supporting a number of the 11 organisations at a level that is increasingly unsustainable.

“In some cases the Trust has provided rescue packages to ensure their survival.”

Trust grants are not a dependable source of funding for these large organisations, because our grants rely on returns from investment capital.

We are also facing increasing demand for grants to other groups in the community.

Trustee appointments confirmed

LONG-STANDING board member and Trust deputy chairman Pat Snedden has finished his term at the Trust after serving on the board for eight years.

Recently appointed Auckland District Health Board chairman, Pat has completed two term as a trustee.

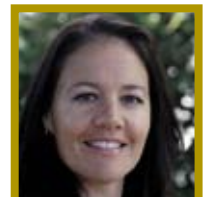
Pat is replaced by North Shore City councillor and former Northcote MP Ann Hartley, who brings many years’ of community involvement and governance experi-

ence to the Trust. Three trustees have been reappointed for another four year term: Brian Lythe, Wilmason Jensen and Kristen Kohere-Soutar.

Brian has been chair of the Trust’s Grants Committee. Wilmason chairs the Pasifika Selection Committee for the Maori and Pasifika Education Initiative. Kristen chairs the Initiative’s Maori Selection Committee and has been chair of the Trust’s Finance Committee.



Pat Snedden



Kristen Kohere-Soutar



Wilmason Jensen



Brian Lythe

Review puts sport goals in spotlight

We have recently reviewed how we fund recreation and sport to make sure the grants we make have maximum impact.

We want to support organisations that focus on community participation and engagement. To do that, we will target organisations that aim to increase participation by younger and/or older people.

You can apply for funding under the following categories:

Participation: funding for local groups.

Engagement and participation: for organisations with innovative projects that align with our recreation and sport strategy and have a regional impact.

Regional infrastructure: for groups needing to improve their infrastructure in order to increase participation.

Encouraging participation

These grants, up to a maximum of \$10,000, are for projects that aim to overcome barriers to participation.

They include grants for:

- supporting volunteers and coaches
- sports equipment and uniforms for juniors
- venue costs, such as lane hire
- access, such as transporting juniors where isolation is a barrier
- safety.

Engagement & collaboration

These grants are for regional organisations working on projects that align with our recreation and sport strategic objectives:

- encouraging participation in recreation
 - focused on younger and/or older people
- We'd expect the project will:
- improve community partnerships
 - connect with the community and existing programmes
 - have project management with a clear vision, supported by a sound project plan and budget.
 - have clear evaluation of how project outcomes will be measured
 - exit strategy – how the project will be sustained after ASB Community Trust funding

Infrastructure

We will consider funding strategically identified sport and recreation infrastructure

We want to support organisations that focus on community participation and engagement.

costs, up to a maximum of \$50,000. This includes facilities and equipment, but not salaries or operating costs.

We'd expect that the project will:

- be part of a regional strategy and be supported by an affiliated regional organisation.
- benefit a high number of younger or older members

When we consider infrastructure applications, we will consult with local authorities about priorities. We will also take into account the existence of similar facilities in the same neighborhood.

Major projects

Facilities such as buildings and halls, including building upgrades, are considered under our capital funding or major capital projects budgets.

You can find out more about these funding areas on our website.



Our goal is increased participation.

Catch the eye of generation Y

Continuing the series of articles focused on resources, we look at resources that help community groups keep pace with the digital age.

YMedia has launched its 2008 challenge, which aims to connect media students with not-for-profit organisations that want to develop an on-line presence.

One of YMedia's founders, Pamela Minett, says many skilled young people want to help community groups, but they don't always use traditional lines of communication to find out about them.

"When young people are interested in an organisation or a cause, they don't pick up the telephone or wander down the street anymore. They search for it online. They Google it," she says.

"It is a challenge to attract Generation Y through the door. The internet is the first place they look because it's easy, quick and allows them to access a large volume of information at their own pace."

That means not-for-profit groups need a strong on-line presence to capture that energy.

yMedia Challenge 2008 offers community groups membership and a profile on its website.

If the organisation, and the project, appeals to media students it is chosen for the competition.

Pamela says that with help from these young professionals, community group will gain the "skills, knowledge, confidence and networks to propel them ahead of the field, keep them moving forward and to maximise the potential of the digital space".

Members also attend free media workshops and networking events, get a profile on the website and a subscription to newsletters.

Last year's challenge winners worked with YouthLaw, helping it reach its target audience – young people – by connecting it with networking sites such as Bebo, Facebook and YouTube.

- www.ymediachallenge.co.nz

Facilities open to all

THE BAY of Islands town of Russell is celebrating the recent opening of its new multi-purpose sports clubrooms.

The Russell Sports Club now has facilities for all the groups regularly using the sports field – golf, soccer, rugby and baseball. It is also used by the school during sports season and can be hired out for community events.

“With the help and support of many individuals and groups within the community, we now have a facility for the community, especially for families and children,” says club chair Mark Hoksbergen.



Children from Russell celebrate the opening with a kapa haka performance.

“We are thrilled with what the community, working together, has accomplished. Now we hope that everyone will use these facilities

– for they are here for everyone to use.”

In 2007 the Trust gave the club a grant to help complete the clubrooms.

Applying for a grant? Here’s a list of what we fund

Our mission: to enhance the lives of everyone in our region by wisely allocating, equitably sharing and responsibly managing the resources that we hold in trust for present and future generations.

Environment

We support projects and organisations that protect and enhance the environment in which we live.

Heritage

We support projects and organisations that preserve and promote the physical and cultural heritage of our region.

Recreation and Sport

We support organisations that focus on community participation and engagement in recreation. Targeted support will be provided for those organisations that aim to increase participation by younger and older people.

Learning

We support projects that improve educational outcomes for people in our region by adding value to the sector, with a focus on innovative projects and lifelong learning.

Health

We support and strengthen community organisations that improve health outcomes for the people of our region, by focusing on health promotion and preventative projects.

Community Wellbeing

We support organisations that respond to the needs identified by our communities. Our focus is on innovative programmes that address the underlying causes of social problems.

Capital Funding and Marae

We support capital building projects where there is a strong community involvement, or where the project has regional significance. In recognition of the special role marae play in our community, the Trust will support marae development projects.

Community Led Enterprise

We work in partnership with key stakeholders to identify projects that will assist social development and economic growth through developing community led enterprises.

Rescue Services

We acknowledge the important and necessary role of rescue services in our region. We

Who can apply?

Incorporated societies and charitable trusts which have been operating for at least 12 months.

How to apply

Download an application form and funding guideline from our website, www.ASBCommunityTrust.org.nz or phone 0800 272 878.

will provide strategic support at a regional level.

Arts and Culture

The Trust supports creative projects and organisations that aim to foster access, engagement and experience in the arts.

Major Capital Projects

This is funding for significant regional projects – facilities where applicants seek \$1 million or more.

Closing dates

Sector	Round 1	Round 2
Arts & Culture	April 1	September 1
Capital Funding	May 1	October 1
Community Led Enterprise	March 1	August 1
Community Wellbeing	February 1	July 1
Environment	June 1	December 1
Heritage	April 1	September 1
Health	February 1	July 1
Learning	June 1	November 1
Major capital projects	September 1	
Marae	February 1	July 1
Recreation & Sport	May 1	October 1
Rescue services	May 1	October 1